



VISHWAKARMA INDUSTRIES



**THE ULTIMATE
PHARMA SOLUTIONS**



DESIGNER, MANUFACTURER & EXPORTER OF
CLEAN ROOM EQUIPMENTS, LAB FURNITURE & OTHER
SS ACCESSORIES FOR PHARMACEUTICAL,
FOOD, HOSPITALITY, MICRO ELECTRONICS
& CHEMICAL INDUSTRY



INTRODUCTION

About Vishwakarma Industries

If you are searching for high end stainless steel clean room equipment and furniture – we assure that you have arrived at the right place. Having started as a humble endeavour of two young technocrats Mr. Arun Shukla and Mr. Anil Dixit, within a decade the name Vishwakarma Industries has emerged as a one stop solution provider for Superior Quality Stainless Steel Fabricated Industrial Cleanroom Equipments, Furniture and Pressure Vessel Equipments both nationally as well as internationally. We are a well known name in design, manufacturing, installation and validation of Cleanroom equipments in pan India & globally.

We continuously thrive to meet our customers requirements for –

- Chemical vapor removal
- Humidification
- Static Control
- Temperature Control
- Vacuum Control
- Fume Filtration
- Particle Filtration
- Sterilization
- Ultra clean equipments

PROTECTING AND ENHANCING QUALITY OF WORK ENVIRONMENTS

Member



Cleanrooms that's all that we know

We create customized solutions for application specific industries in Pharmaceutical, Chemical, Biotech, Food & Hospitality and Microelectronics sectors. The product range includes Cleanroom Equipment (Static & Dynamic Pass Box, HLAFF, VLAFF, RLAFF, Bio Safety Cabinet, AIR/MIST Shower etc.) and Cleanroom Furniture (workstations, cabinets, racks, apron lockers etc)

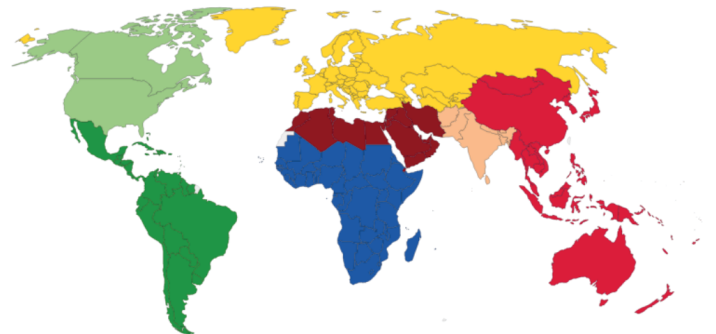
Our Motto

Vishwakarma Industries is committed to build further on its history of

- Product Excellence
- Technology Innovation
- Satisfied Customers

in order to provide reliable products to customers drawn from a variety of industries.

GLOBAL PRESENCE



- INDIA
- UAE
- OMAN
- KENYA
- SRI LANKA
- BANGLADESH
- NEPAL

MIST SHOWER BOOTH

Mist Shower Booth supplies a fine, low volume misting "fog" intended to affix loose powder on the surface of the occupant's protective clothing (PPE). This helps prevent any hazardous particulate from becoming airborne when degowning.

Mist Shower Booth is installed at exit of clean room where Hazardous Product like Onco Drugs, Harmonal Injectible, Strile products and likewise.

The Misting Booth is a contamination control device for the respiratory protection from inhalation of these hazardous products to the operator during the degowning process.



GENERAL SPECIFICATION

Sr. No.	Item	Description
1.	MOC	SS 304 / SS 316 / SS 316L combination of SS 304 & SS 316 as per – ASTM A
2.	Two stage filtration s	EU6 – Fine Filter (efficiency 95% down to 5 micron) EU-14 HEPA - Filter Supply (99.999% down to 0.3 micron)
3.	Operating Condition	ISO class 5 (ISO 14644 – I : 2015 (E))
4.	General Specifications	SS 304 door with double wall flush view panel & door closer SS 304 water shower nozzles LED Light fixture SS 304 Drain system SS 304 DOP test port Solenoid Valve for Air & water control Spray gun for manual operate (Water / Air) for cleaning Water proof door release switch & Emergency switch inside MIST Shower Control System to ensure that both the doors cannot open at the same time & to ensure that both the doors will be locked during the process Timer setting for mist shower operation Straight Entry – Straight Exit / 90° door opening Automatic as well as manual Mode



AIR SHOWER

Air Shower is designed to supply Class 100 HEPA filtered air at high velocity it helps remove particulate matter from the personnel entering into the clean room. Air Shower works as partial clean equipment installed at the partition between the clean room and non-clean rooms to shower the personnel or matter before entering the clean area. This units helps to remove dust effectively and maintains the normal working status. Air Shower is available in various standard dimensions also our cabinet can be custom engineered to fit any size. These units are available in powder coated mild steel / SS 304 or combination of both.

GENERAL SPECIFICATION

Sr. No.	Item	Description
1.	MOC	Powder coated Mild Steel/ SS 304 or combination of both
2.	Two stage filtrations	EU 14 HEPA Filter Supply (99.999%) down to 0.3 micron) EU 6 - Fine Filter - (efficiency 95% down to 5 micron)
3.	Motor Blower	Dynamically balanced with suitable rating and size LED Lights with milky white diffuser 5/15 Amp switch socket for external equipment SS 304 / Aluminum (Anodized) Air Nozzle Electromagnetic Inter locking system to ensure that both the doors cannot open at the same time & to ensure that both the doors stay locked during the time of air flow SS 304 Sandwiched doors with toughened glass view panel with proper gasketing
4.	Operating Conditions	ISO class 5 (ISO 14644-1: 2015 (E))
	Air Cleanliness	0.45 + 0.05 mps.
	Air Velocity	Vertical - Horizontal
	Air Flow	Less than 67dB on scale 'A' when ambient is not greater than 55 dB on scale 'A'
	Noise Level	Minimum
	Vibration Level	



REVERSE LAMINAR AIR FLOW (RLAF)

Booth for product's sampling and dispensing are design as open front containment systems with built - in scavenging arrangement that draw power aerosol away from the operator and the operating environment, protecting product & Personnel.

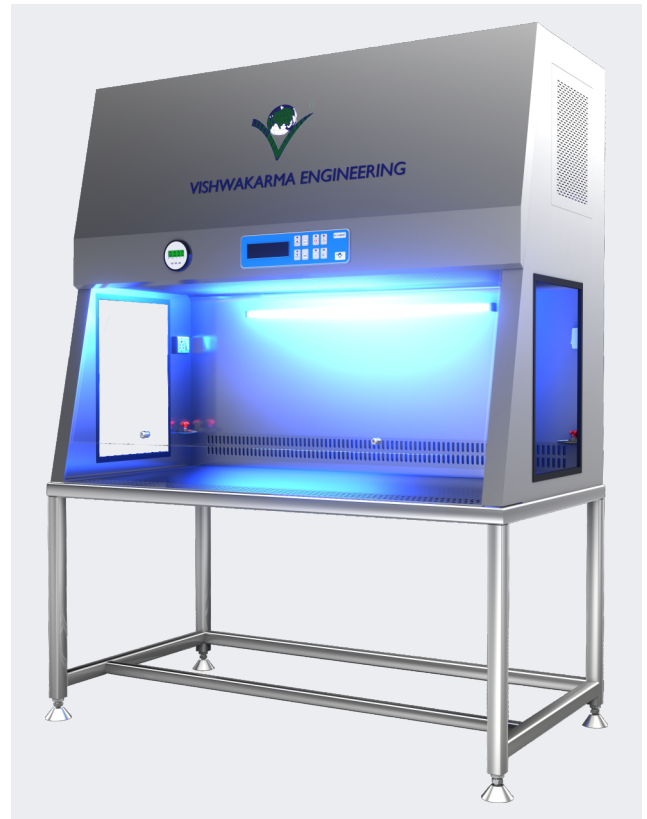
GENERAL SPECIFICATION

Sr. No.	Item	Description
1	MOC	SS 304 / SS 316 / SS 316L combination of SS 304 & SS 316 as per - ASTMA
2	Three stage filtration	EU14 - HEPA Filter- Supply (99.999% down to 0.3 micron) EU6 - FINE Filter (efficiency 95% down to 5 micron) EU4 - Prefilter (arrestance 85% down to 10 micron)
3	Motor Blower	Dynamically balanced with suitable rating and size LED Lights with milky white diffuser Glass side panel Clean Down Timer with operation hold indicators 5/15 Amp switch socket for external equipment ON / OFF switch Digital Differential pressure gauge DOP Test Port
4	Operating Conditions	
	Air Cleanliness	ISO class 5 (ISO 14644-1: 2015 (E))
	Air Velocity	0.45 +/- 0.05 mps.
	Air Flow	Vertical - Recirculatory
	Noise Level	Less than 70 dB on scale 'A' when Ambient is not greater than 55dB on scale 'A'
	Vibration Level	Minimum
5	Optional Accessories	SS Perforated Safety Grill for HEPA Filter Front Anti Static PVC Curtains (For warehouse applications) SS 304 Anti Vibration table for keeping weighing scale LED Lights / Sodium Vapor Lamps Audio Visual Alarm indicating condition of HEPA Filters Flame Proof Fitting 5/15 Amp single - phase switch socket



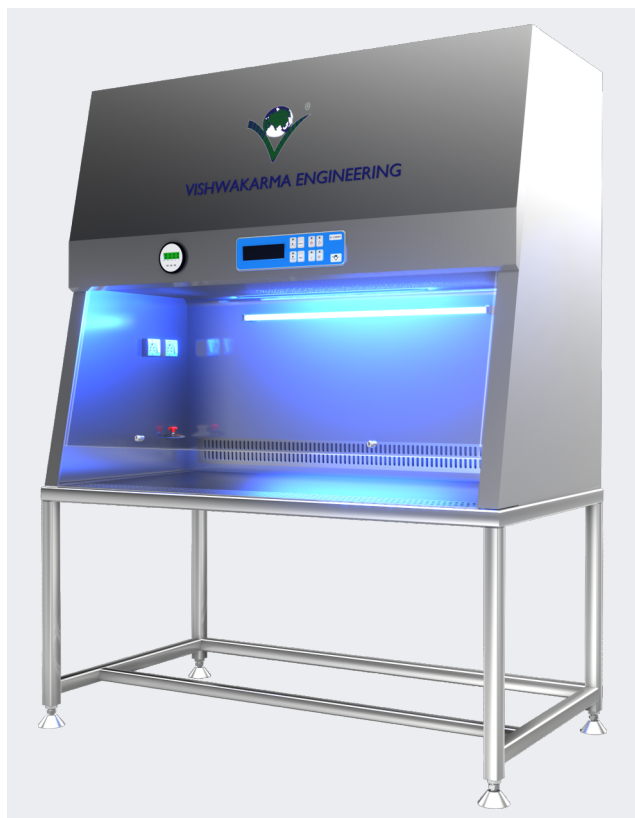
LAMINAR AIR FLOW (CSVLAF, SMVLAF & HLAF)

Laminar Air Flow cabinets are designed for creation of a bacterial dust free air space .The work area is continuously supplied with positive pressure Hepa filtered vertical / Horizontal airflow & prevents contamination from operator and environment to work area. Airflow cabinets are used for work with low risk substances & material.



GENERAL SPECIFICATION

Sr. No.	Item	Description
1.	MOC	SS 304 / SS 316 / SS 316L combination of SS 304 & SS 316 as per - ASTMA
2.	Two stage filtrations	EU6 - FINE Filter (efficiency 95% down to 5 micron) EU14- HEPA Filter - Supply (99.999% down to 0.3 micron)
3.	Motor Blower	Dynamically balanced with suitable rating and size LED Lights with milky white diffuser SS 304 / Glass side panel 5/15 Amp switch socket for external equipment ON / OFF switch
4.	Operating Conditions	ISO Class 5 (ISO 14644-1:2015) [E]
5.	Air Cleanliness	0.45 +-0.05 mps
	Air Velocities	Vertical / Horizontal
	Air Flow	Less than 67 dB on scale 'A' when ambient is not greater than 55dB on scale 'A'
	Noise Level	Minimum
	Vibration Level	Vinyl Curtain
6.	Optional Aecessories	Polycarbonate enclosures with Front Door (Hinged/ Pneumatic Cylinder) SS Perforated Safety Grill for HEPA Filter Audio Visual Alarm indicating condition of HEPA Filter U.V. Light with Hour meter Air/ Gas Cock Vishwakarma Industries Data Management 21 CFR Part 11 compliance Software.



BIO-SAFETY CABINET

Biological Safety Cabinet Class II Type A2 provide personnel, environmental and product protection. Air flow is drawn around the operator into the front grill of the cabinet, which provides personnel protection. In addition, the downward laminar flow of HEPA-filtered air provides product protection by minimizing the chance of cross-contamination along the work surface of the cabinet. Because cabinet air has passed through the exhaust HEPA filter, it is contaminant-free (environmental protection).

GENERAL SPECIFICATION

Sr. No.	Item	Description
1	MOC	SS 304 / SS 316 / SS 316L combination of SS 304 & SS 316 as per - ASTMA
2	Three stage filtrations	EU4 - Prefilter (arrestance 85% down to 10 micron) EU14 - HEPA Filter- Supply (99.999% down to 0.3 micron) at supply / exhaust position return air filter. EU6 - FINE Filter (efficiency 95% down to 5 micron)
3	Motor Blower	Dynamically balanced with suitable ratings and size. ON / OFF switch Digital pressure gauge SS 304 DOP Test Port
4	Operating Conditions	Air Cleanliness ISO class 5 (ISO 14644-1: 2015 (E)) Air Velocity 0.45 + 0.05 mps. Air Flow Vertical - Recirculatory Noise Level Less than 65 dB on scale 'A' when Ambient is not greater than 55dB on scale 'A' Vibration Level Minimum
5	Options & Accessories	Audio Visual Alarm indicating condition of HEPA Filters Flame Proof Fitting U.V. Light with Hour meter Vishwakarma Industries Data Management 21 CFR Part 11 compliance Software.



PASS THROUGH BOX

1. **Dynamic Pass boxes** are designed in conformation to the international standards are used for transferring the material through controlled environment to different classified area to avoid cross contamination & maintain integrity of product & process
2. **Static Pass Boxes** are suitable to provide a bacterial free environment during the material transfer between same classification areas by means of electro magnetic interlock and UV light.

VHP(H₂O₂)/ IPA PASS BOX

Vapourized hydrogen peroxide (H₂O₂) Pass Box with Recovery cycle Programmed provides personnel environmental and product protection. Airflow is "Once Through System for respective VHP cycle operation with aeration cycle, as per process requirement, which provides personnel protection. In addition, the downward flow of HEPA filtered air provides protection by minimizing the chance of cross contamination along the work surface of the VHP Pass Box.



GENERAL SPECIFICATION

Sr. No.	Item	Description – Pass Through Boxes	Description – VHP Pass Box
1.	MOC	SS 304 / SS 316 / SS 316L, combination of SS 304 & SS 316 as per – ASTM A	SS 316 L
2.	Two stage filtration (for DPB)	EU 6 – Fine (efficiency 95% down to 5 micron) EU 14 – HEPA Filter – Supply (99.999%) down to 0.3 micron)	EU 14 - HEPA Filter - efficiency 99.999% down to 0.3 microns at supply & exhaust of the pass box.
3.	Motor Blower (for DPB)	Dynamically balanced with suitable rating & size. SS 304 Sandwiched doors with proper gasketing SS Handle and SS Flag Hinges Inner side Bottom corners with be duly coved for easy cleaning. Electro magnetic door interlock with SS indicator & SS Door release switch on both side Digital pressure gauge. Dop Test port	Dynamically balanced with suitable rating & size Toughened Glass Doors on the both side with inflatable gasket to assure the system must be leak proof. SS 316 L Handles, Hinges & other supportive accessories Inner side bottom corners will be duly coved for easy cleaning Door interlocking system to assure that only one side door can be accessed at given time with its accessibility though automatically programmable control system.
4.	Operating Conditions Air Cleanliness Air Velocity Air Flow Noise Level	ISO class 5 (ISO 14644 -I : 2015 (E)) 0.45 +-0.05 mps. (for DPB) Vertical – Re-circulatory (for DPB) Less Than 67dB on scale 'A' when ambient is not greater than 55dB on scale 'A' (for DPB)	Single Wall Construction with mirror finishing in the contact area and matt finishing in the non contact area VHP Integration tank of one litre capacity in built in the system which is further interconnected with the VHP reservoir
5.	Vibration Level Optional Accessories	Minimum Mechanical Interlocking U.V. Light with Hour meter with interlocking arrangement to put - off U.V. light if either open Support stand to mount the pass box on wall. Flange for sealing the Gap between the pass box and the clean room wall Flame Proof Fitting	U.V. Light with hour meter with interlocking arrangement to put -off U.V. light if either side door opens. Flame Proof Fitting

DEDUSTING TUNNEL/BOOTH

The De- Dusting Tunnel/Booth system used to remove the loose particles/dust present on the receiving materials, which will be brought into the warehousing area before they are transferred into the quarantine area.

Motorized roller conveyor leads to transfer of heavy load material from material loading to dedusting chamber and than finally to material unloading side.



GENERAL SPECIFICATION

Sr. No.	Item	Description
1.	MOC	SS 304 / SS 316 / SS 316L combination of SS 304 & SS 316 as per - ASTMA
2.	Two stage filtrations	EU6 - Fine Filter (efficiency 95% down to 5 micron) EU 14 - HEPA Filter - Supply (99.999% down to 0.3 micron)
3.	Motor Blower	Dynamically balanced with suitable rating and size Fluorescent Lights with milky white diffuser SS on / off switch Digital Differential pressure gauge
4.	Sequence of Operation	"Vehicle arrives and docks at receiving bay" An operator starts the De-dusting chamber's blowers first and then Conveyor - by pushing the buttons on the push button station Loose material (one at a time) is manually loaded onto the conveyor The material passes through the De-dusting chamber and on the exit side. These are again manually retrieved from the conveyor for further movements The roller conveyor we are providing is suitable to lift instant heavy load with its chain - gear mechanism by the help of gear box motor of suitable capacity. Belt conveyor we also providing with this unit having their load carrying capacity of 800 kg to 1000 kg We can also provides brushing system in manual and automatic operation with the help of programmable HMI / PLC based control system. We can also provide door mechanism on material unloading side. That door either can be leaf type double door or high speed rolling shutter depending upon client's feasibility.



GARMENT CABINET

The application of Garment Cabinet is for storing the sterile aprons. The unit is used to avoid the dust contaminations as well as the bacterial growth. Unit is used in pharmaceuticals Bio-tech, Food, Electronic Industries. The work area is continuously supplied with positive pressure HEPA filtered re circulated air flow.



GENERAL SPECIFICATION

Sr. No.	Item	Description
1.	MOC	SS 304 / SS 316 / SS 316L combination of SS 304 & SS 316 as per - ASTMA
2.	Two stage filtrations	EU6 - FINE Filter (efficiency 95% down to 5 micron) EU 14- HEPA Filter - Supply (99.999% down to 0.3 micron)
3.	Motor Blower	Dynamically balanced with suitable rating and size SS Sandwiched door with toughened glass view panel with proper gasketing UV Light with Hour Meter SS Hanging arrangement/ SS 304 Removable shelves SS Flag Hinges and SS Handles ON / OFF switch. Minihelic Gauge LED Light (250 Lux) DOP Test Port at upstream of HEPA Filter
4.	Operating Conditions	
	Air Cleanliness	ISO class 5 (ISO 14644-1: 2015 (E))
	Air Velocity	0.45 +- 0.05 mps.
	Air Flow	Horizontal - Re circulatory
	Noise Level	Less Than 67 dB on scale 'A' when Ambient is not greater than 55dB on scale 'A'
	Vibration Level	Minimum

CONTAINMENT SYSTEM

A leak proof work station to maintain the durability of work process & final product which is further classified into two categories i.e.

1. Negative Pressure Isolator
2. Positive Pressure Isolator

Their classification depends upon the security priority i.e. in case of operator's safety, negative pressure isolator is suggested while in case product safety positive pressure isolator is suggested to use.



GENERAL SPECIFICATION

Sr. No.	Item	Description
1.	MOC	SS 316 L for all contact and non contact area.
2.	Two stage filtrations	EU 14 - efficiency 99.999% down to 0.3 micron HEPA filter at supply and exhaust with EU 7 grade pre filter.
3.	Motor Blower	Statically and dynamically balanced motor blower suitable to maintain calculated air changed per hour as per the designed.
4.	Accessories	<p>Toughened glass view panel at front side with neoprene gloves to provide ease of operation during the process.</p> <p>Inflatable gasket to ensure the system is leak tight from the glass side.</p> <p>Air cylinder for the movement of glass</p> <p>Anti vibrational table for weight balance</p> <p>Magnehelic differential pressure gauges to measure the pressure drop.</p> <p>Pass through box beside the main working chamber for material movement to the main chamber</p> <p>Cartridge filter in the between pass through box and main chamber.</p> <p>SS 316 L pipe stand to maintain a working height level from the flooring</p> <p>Linear arrangement for material loading and unloading to the main chamber</p> <p>LED light in main chamber and pass box to maintain desired lux level</p> <p>SS 316 L round pipe duct arrangement to escape the exhaust air outside surrounding atmosphere.</p>



STABILITY CHAMBER

Stability Chambers manufactured by Vishwakarma Industries are designed as per ICH, WHO, & international Stability guidelines & standards with the help of several years of experience to meet the requirement of Studies.

Application:

- Stability Testing is an essential part of R&D, Q.C, Q.A departments and formulation development.
- It helps to generate information, which permits well-considered proposals to be made for the shelf life of drug substances and products and recommended storage condition.
- Stability data are required to be submitted as a part of the record to the regulatory agencies for licensing approval.

Construction Features:

- Thick Puff insulated panels for less heat & cooling loss.
- Distributed unique air flow system for maximum uniformity of temperature and humidity through out the chamber.
- Full Glass Door View & chamber illumination.



Control Features:

- Microprocessor based PID controller (Temperature & Humidity controller) with high accuracy of $\pm 0.2^{\circ}\text{C}$ & $\pm 2\%$ RH.
- Three wire RTD sensor & direct output capacitance type RH sensor.
- Safety Controller system for Temperature overshoot & undershoot with buzzer & LED in case of temperature controller fails.
- Additional Safety thermostat provided to prevent the temperature overshoot in case if safety controller fails.
- Low water level Safety cut off for humidity boiler heater.
- CFC Free Eco- Friendly cooling systems.
- Printer/PC interface for online / offline print of data on 80 col. Dot matrix printer or on PC with data storage capacity of 2500 readings & print interval settable from 1-255 mins.
- Vishwakarma Industries Data Management 21 CFR Part 11 compliance Software.
- Power off Power resumed remark in software.
- Complete IQ, OQ and PQ documentation & operating manual.

Technical Specifications:

- Available in GMP and Standard Models
- GMP model: Inside S.S 316 Matte finish and outside S.S 304 Matte finish
- Standard model: Inside S.S 304 Matte Finish and outside mild steel powder coated
- The below mentioned chambers are manufactured for ICH conditions like
- $25^{\circ}\text{C} / 60\% \text{ RH}$, $30^{\circ}\text{C} / 65\% \text{ RH}$, $40^{\circ}\text{C} / 75\% \text{ RH}$
- Other sizes available as per requirement
- Also Low RH Stability chambers are manufactured for conditions like
- $25^{\circ}\text{C} / 40\% \text{ RH}$, $40^{\circ}\text{C} / 25\% \text{ RH}$, $30^{\circ}\text{C} / 35\% \text{ RH}$ etc
- Optional Accessories:
- Scanner (Data logger) with 4+4 or 8+8 sensors for continuous scanning of temperature humidity uniformity.
- Standby Cooling System.
- Standby Humidity System.
- Mobile alert through GSM
- Door Access Security System
- PLC for auto change over cooling system and humidity system
- Imported linear type Temperature Humidity sensors



VACUUM OVEN

Vishwakarma Industries make vacuum ovens are designed & manufactured to comply requirements of industry. It is widely applicable for drying & sterilization in field of biochemistry, pharmacy, medicine, health, agriculture & scientific research and environment protection. It is designed specifically for drying of material which is thermo sensitive or decompounded and oxidative easily.

Technical Specifications:

- Temp. Range : 50°C to 200°C
- Temp. Accuracy : $\pm 1.0^{\circ}\text{C}$
- Supply : 230V, AC
- Capacity (Litres) : 15 & 28 in Circular Model ; 43, 91 & 216 in Rectangular Models
- Uniformity : $\pm 50^{\circ}\text{C}$ on tray



BACTERIOLOGICAL INCUBATOR

Bacteriological Incubator manufactured by Vishwakarma Industries is designed as per ICH & WHO guidelines & I.S standards with the help of several years of experience. This equipment is used in various fields like medical, vaccines, agricultural, research laboratories, culture of bacteria, microorganism, seed germination studies Bacteriological Incubator is generally based on ambient temperature for growth of bacteria.

Application:

- Temperature testing is an essential part of R & D, Microbiology departments and formulation development.
- It helps to generate information, which permits well-considered proposals to be made for the shelf life of drug substances and products and recommended storage condition.
- Temperature data are required to be submitted as a part the regulatory agencies for licensing approval.

Construction Features:

- Thick Puff insulated panels for less heat & cooling loss.
- Distributed unique air flow system for maximum uniformity of temperature through out the chamber.
- Full Glass Door View & chamber illumination.

Control Features :

- Microprocessor based PID controller (Temperature controller) with high accuracy of $\pm 0.2^{\circ}\text{C}$.
- Three wire RTD sensors.
- Safety Controller system for Temperature overshoot & undershoot with buzzer & LED in case of temperature controller fails.
- Additional Safety thermostat provided to prevent the temperature overshoot in case if safety controller fails.
- CFC Free Eco- Friendly cooling systems.
- Printer/PC interface for online / offline print of data on 80 col.
- Dot matrix printer or on PC with data storage capacity of 2500 readings & print interval settable from 1-255 mins.
- Vishwakarma Industries Data Management 21 CFR Part 11 compliance Software.
- Power off Power resumed remark in software.
- Complete IQ, OQ and PQ documentation & operating manual.

Technical Specifications:

- Available in GMP and Standard Models
- GMP model: Inside S.S 316 Matte finish and outside S.S 304 Matte finish
- Standard model: Inside S.S 304 Matte Finish and outside mild steel powder coated.
- Other sizes available as per requirement

Optional Accessories:

- Scanner (Data logger) with 4 or 8 sensors for continuous scanning of temperature uniformity.
- Standby Cooling System.
- Mobile alert through GSM
- Door Access Security System
- PLC for auto change over cooling system
- Imported linear type Temperature sensors

BOD INCUBATOR

BOD Incubator manufactured by Vishwakarma Industries Equipments are designed as per ICH & WHO guidelines & I.S standards with the help of several years of experience to meet the requirement of different bio chemical oxygen demand test equipment in various fields like medical, vaccines, agricultural, research laboratories, culture of bacteria, microorganism, seed germination studies

Application:

- Temperature testing is an essential part of R & D, Microbiology departments and formulation development.
- It helps to generate information, which permits well-considered proposals to be made for the shelf life of drug substances and products and recommended storage condition.
- Temperature data are required to be submitted as a part of the record to the regulatory agencies for licensing approval.

Construction Features:

- Thick Puff insulated panels for less heat & cooling loss.
- Distributed unique air flow system for maximum uniformity of temperature through out the chamber.
- Full Glass Door View & chamber illumination.

Control Features :

- Microprocessor based PID controller (Temperature controller) with high accuracy of $\pm 0.5^{\circ}\text{C}$.
- Three wire RTD sensors.
- Safety Controller system for Temperature overshoot & undershoot with buzzer & LED in case of temperature controller fails.
- Additional Safety thermostat provided to prevent the temperature overshoot in case if safety controller fails.
- CFC Free Eco- Friendly cooling systems.
- Printer/PC interface for online / offline print of data on 80 col.
- Dot matrix printer or on PC with data storage capacity of 2500 readings & print interval settable from 1-255 mins.
- Vishwakarma Industries Data Management 21 CFR Part 11 compliance Software.

- Power off Power resumed remark in software.
- Complete IQ, OQ and PQ documentation & operating manual.

Technical Specifications:

- Available in GMP and Standard Models
- GMP model: Inside S.S 316 Matte finish and outside S.S 304 Matte finish
- Standard model: Inside S.S 304 Matte Finish and outside mild steel powder coated.
- Other sizes available as per requirement

Optional Accessories:

- Scanner (Data logger) with 4 or 8 sensors for continuous scanning of temperature uniformity.
- Standby Cooling System.
- Mobile alert through GSM
- Door Access Security System
- PLC for auto change over cooling system
- Imported linear type Temperature sensors





MODULAR LAB FURNITURE & FUME HOOD



GENERAL SPECIFICATION

Sr. No.	Item	Description
1.	MOC	MS Powder coated / SS 304
2.	Designing	As per client feasibility and the available area Can be design or QC/ QA and R & D Labs Can be design for official use also Consist of fume hood of desirable working space 610x610x610MM Color coding of powder coating also as per the clients requirements Basically will be RAL 9010



Step Ladder



Mopping Trolley



Material Transport Trolley



Die Punch Cabinet



Apron / Piecion Locker SS/MS



Almirah



IPC



Cone Blender



Pressure Vessel



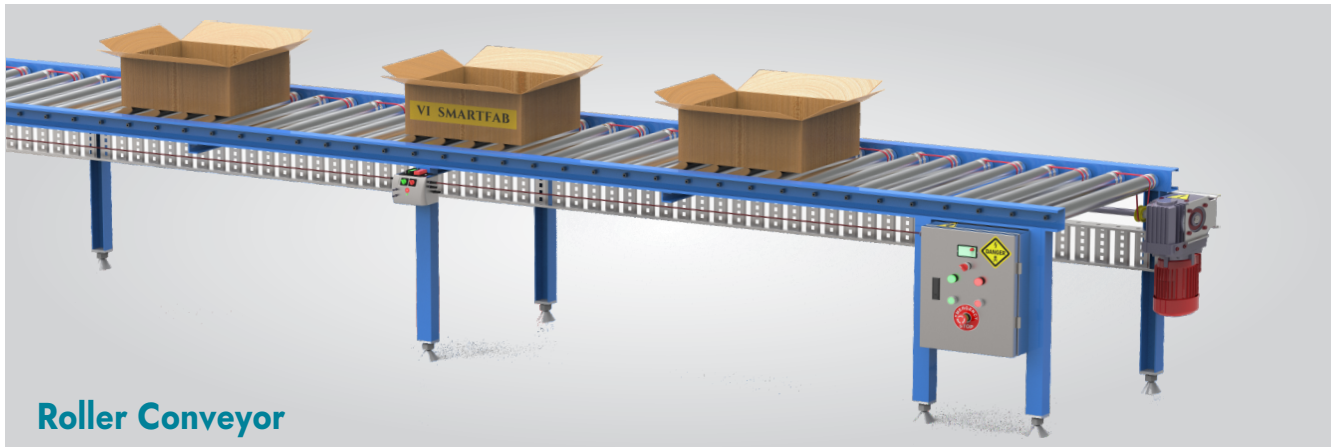
Steam Jacketed Tank



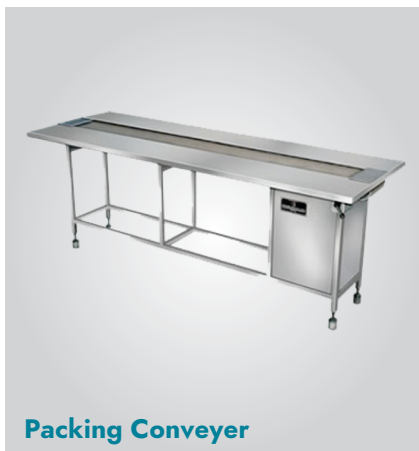
SS Sink Unit



Sink Table with Foot Operated Tap



Roller Conveyor



Packing Conveyor



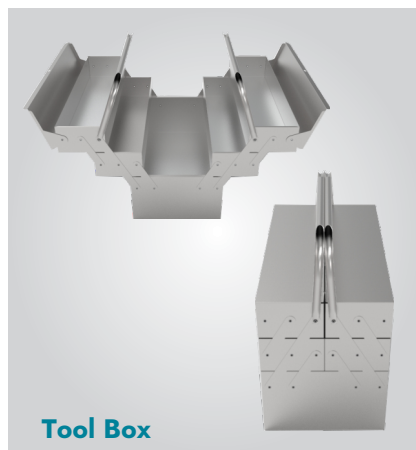
Turn Table



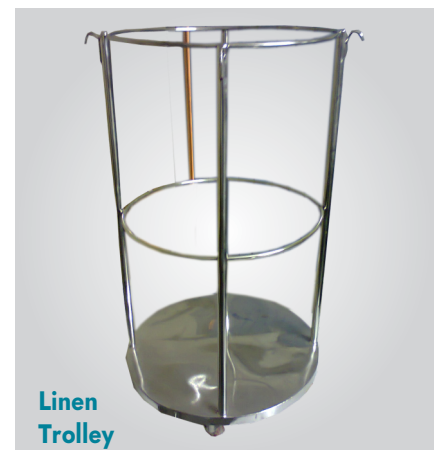
Executive Table



SS Table



Tool Box



**Linen
Trolley**



Pallet



SOP Stand



Visual Inspection Table



SS Stool



Chair



IPA Stand



Wastebin



Scoop



SS Measuring Mug



SS Oil Cane



Funnels



SS Tray

VI SMARTFAB

HYGIENE | SMART & COMPACT | COST EFFECTIVE

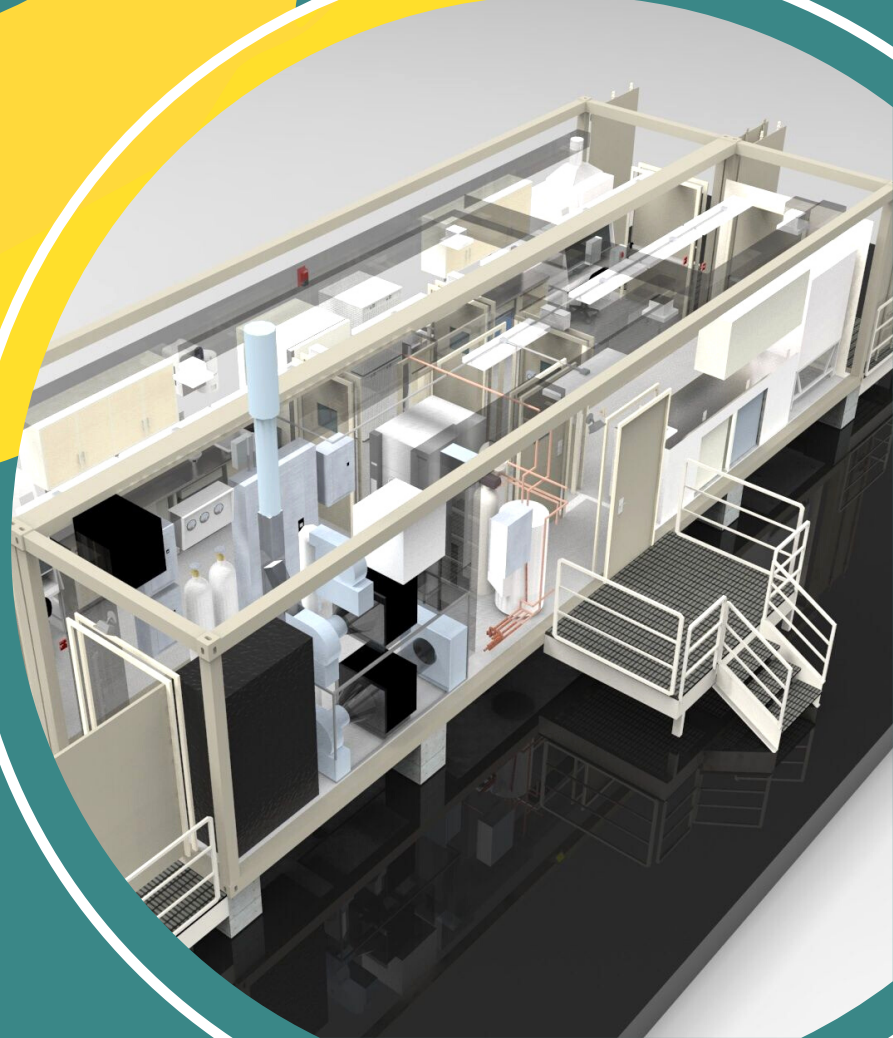
- Design & development of hygienic equipment, integrated systems/lines for Food , Pharma & FMCG industry .
- Fabrication of smart & custom build solutions.
- Packaging & material handling cost effective automation.



SMART BUILD

- Pre-build smart construction with equipment , accessories , fit-outs for quick construction .

Solution for fast build labs , amenities , production blocks.



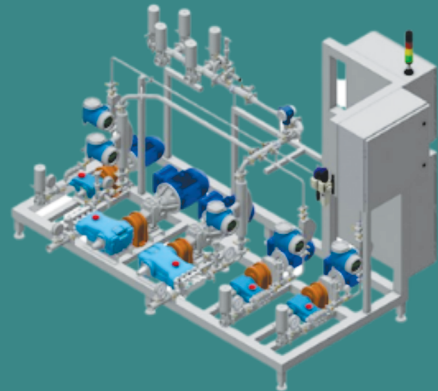
enquiry@vismartfab.com

www.vismartfab.com

VI SMARTFAB

Hygienic processing aids

- Change room solutions
- Hygienic area entry solutions
- Process and packaging area material handling
- Custom solutions as per customer requirement

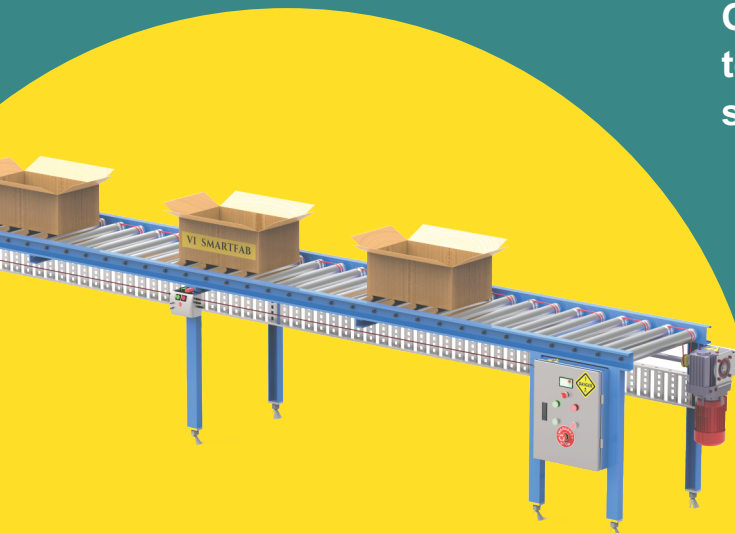


Process equipment, skids & solutions

- Blending solutions (liquid & powder)
- Storage & Missing vessel
- Dissolving & cooking
- Drying systems
- Coating solution for confectionery & pharma applications.
- Customized per-build process skids as per customer requirement

Packaging Solutions

Our focus is to automate secondary & tertiary packaging with cost effective solutions.



OUR ESTEEMED CLIENTS



OUR OVERSEAS CUSTOMER



VISHWAKARMA INDUSTRIES
www.vishwakarmaindustry.in

HIMACHAL PRADESH

VISHWAKARMA INDUSTRIES | VI SMARTFAB | VISHWAKARMA ENGINEERING

Jagat Khana, P.O. Manjholi, Tehsil Nalagarh, Distt. Solan, Himachal Pradesh 174 101

T : +91 1795 265318 | F : +91 1795 265319 | M : 09318777385 |
E : vishwakarma.hp@gmail.com, vishwakarma.hp1@gmail.com